

Safety Flow Meter S-SM 3-1

Certain applications in fluid and gas analysis require additional safety precautions, including flow meters. Here it's particularly important to protect the clear measuring tube from mechanical damage. In this series a solid, slotted stainless steel protective tube ensures this protection.

Even with the measuring tube already having a thick wall, the stainless steel casing of course also protects the surroundings in the event a glass cylinder bursts.

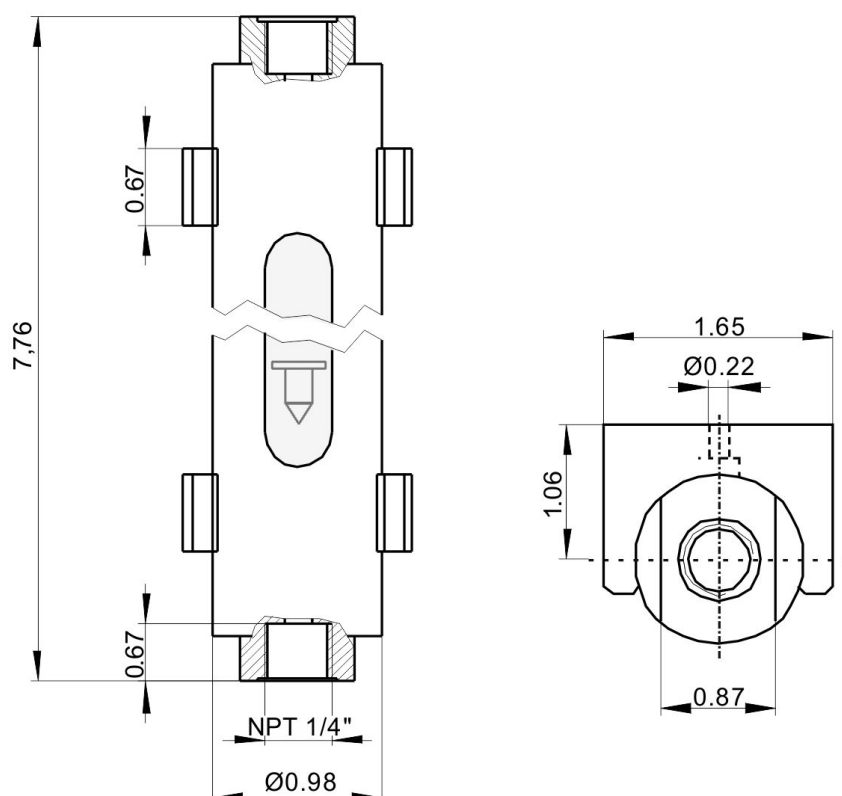
Robust, simple protection

Large range of applications

High safety standard



Flow meter dimensions

**Use in explosive areas (additional notices):**

The flow meter meets the fundamental safety requirements of Directive 2014/34/EU and is suitable for use in zone 1, explosion group IIC. The flow meter is not marked, as it does not have an innate ignition source and Directive 2014/34/EU therefore does not apply.

Be sure to observe the instructions in the respective operating instructions!

Technical Data**Safety Flow Meter S-SM**

Ambient temperature:	-4 °F to 176 °C *
Operating pressure:	10 bar (at max. 68 °F) **
Operating temperature:	212 °F (at max. 29 psi) **
Measuring range:	see table
Weight:	2 lbs
Float:	glass, Hastelloy, stainless steel or PTFE
End sections:	PTFE, stainless steel or titanium
Mounting:	via included pipe clamps

* specify in order, select mounting.

** Max. operating pressure [bar] = $10 - \frac{\text{Max. operating temperature [°C]} - 20}{10}$

Typical measuring ranges

Flow Meter S-SM 3-1		
Medium:	Air	Water
Pressure:	+ 17.4 psi abs	
Temperature:	+ 68 °F	+ 68 °F
	1.6 – 16 NI/h	0.25 - 2.5 l/h
	4 – 40 NI/h	0.5 - 5 l/h
	6 - 60 NI/h	1.2 - 12 l/h
	10 – 100 NI/h	2.5 - 25 l/h
	25 – 250 NI/h	
	50 – 500 NI/h	
	80 – 800 NI/h	

Spare parts and accessories

Item no.	Description	
40 22 999	Flow Meter S-SM 3-1	End sections stainless steel 1.4571
40 23 999	Flow Meter S-SM 3-1	End sections titanium