



Condensate Vessel CV-3, CV-6, CV-10

In extractive gas analysis, the sample gas must be conditioned before it enters the measuring cell of the analyser.

One of these conditioning stages is moisture precipitating in so-called sample gas coolers.

This condensate must be properly removed from inside the analysis cabinet. In applications where it is not corrosive or toxic, it can then be discharged into drains or channels on site. However, it must often first be collected for intermediate storage and properly disposed of at a later time.

The CV-3 to CV-10 series feature vessels in suitable materials for intermediate storage inside or on the system. These are optionally available with liquid level switch or level switch.

Vessel sizes 3 l (0.8 gal) / 6.5 l (1.7 gal) / 10 l (2.6 gal)

Chemically resistant materials

Output of fill level via level switch (optional)

Signalling of maximum liquid level by liquid level switch (optional)

Low maintenance

Easy handling

Removable top cover

Robust mounting bracket



Technical Data

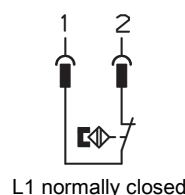
Condensate vessels technical data

Material:	PVC, PVDF, PP, Viton
Medium temperature:	max. 140 °F
Connections:	G3/8 and G1/4 for condensate inlet and ventilation G1/4 for discharge

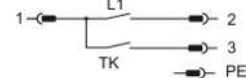
Liquid level / level switch

Max. operating voltage:	230 V
Max. switching current:	0.5 A
Max. contact load:	10 VA

Contact function
Float down
(empty vessel)
Contacts K8-MS



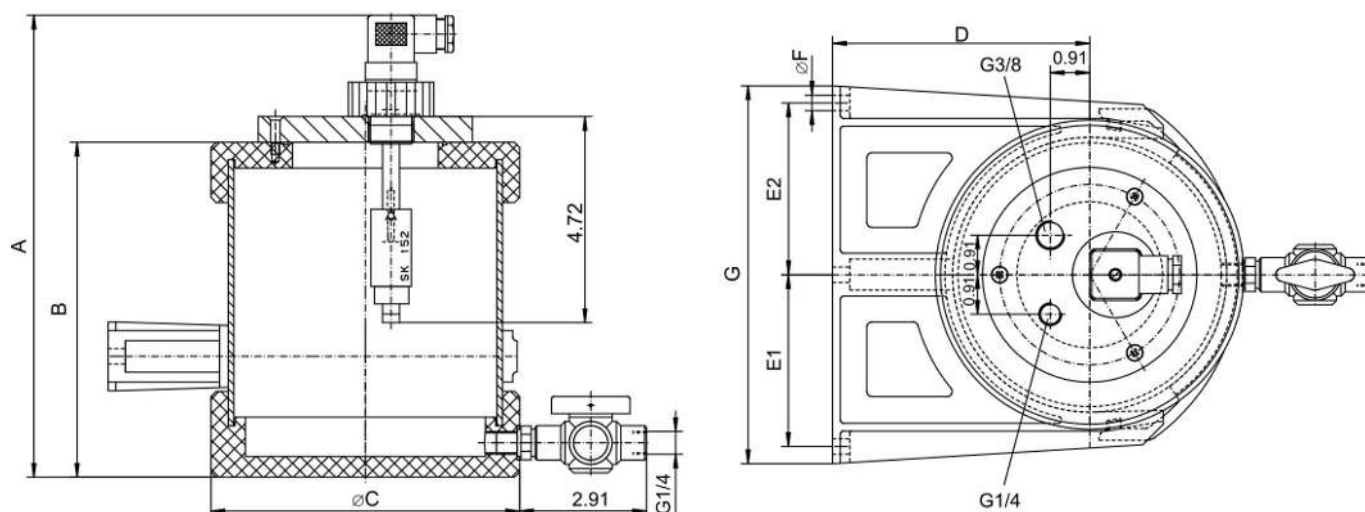
Level switch pin
assignment *



L1 normally closed

* For model NSHL condensate vessels with level switch.

Dimensions



Vessel type	A (inch)	B (inch)	C (inch)	D (inch)	E1 (inch)	E2 (inch)	F (inch)	G (inch)
V = 3 l (0.8 gal)	10.6	7.7	Ø 7.1	5.9	3.9	3.9	3 x Ø0.4	8.7
V = 6,5 l (1.7 gal)	13.5	10.6	Ø 8.9	6.9	4.7	5.9	2 x Ø0.5	12.2
V = 10 l (2.6 gal)	17.9	15.0	Ø 8.9	6.9	4.7	5.9	2 x Ø0.5	12.2

DANGER**Use in explosive areas**

The equipment is **not** suitable for use in explosive areas.

DANGER**Toxic, corrosive condensate**

- Protect yourself from toxic, corrosive condensate when performing any type of work.
- Wear appropriate protective equipment.
- Please note the national safety rules!



Ordering instructions

Item no.	Description
4410085	Condensate vessel CV-3, V = 3 l (0.8 gal) without liquid level switch
4410088	Condensate vessel CV-3-NS, V = 3 l (0.8 gal) with liquid level switch
4410080	Condensate vessel CV-3-NSHL with level switch
4410096	Condensate vessel CV-6-NS, V = 6.5 l (1.7 gal) with liquid level switch
4410097	Condensate vessel CV-6, V = 6.5 l (1.7 gal) without liquid level switch
4410082	Condensate vessel CV-6-NSHL with level switch
4410094	Condensate vessel CV-10-NS, V = 10 l (2.6 gal) with liquid level switch
4410095	Condensate vessel CV-10, V = 10 l (2.6 gal) without liquid level switch
4410084	Condensate vessel CV-10-NSHL with level switch
44100943	Liquid level switch Nivotemp M-K8MS-PVDF-L120