

Sample gas probe GAS 222.10

In many applications gas analysis is the key for safe and efficient control of process flows, environmental protection and quality assurance. In extractive gas analysis the location of the gas sampling point is crucial for the reproducibility and accuracy of the analysis results.

The specific filter capacity, corrosion resistance and functional equipment requirements for the probe arise from the composition of the sample gas.

However, operating costs are also an important criterion in the selection, as the sampling points are frequently located at hard to access points in the system. Effective particle filter backwashing options and low maintenance characterise the extensive GAS probe series.

Unheated probe with downstream filter for indoor installation.

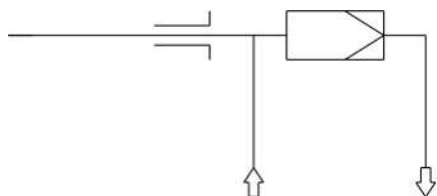
The filter element can easily be removed by turning the handle 90°

For dust loads up to 2 g/m³

The probe is suitable for use in explosive areas



Flow chart



Technical Data

Gas Probe Technical Data

Operating temperature:	max. 395 °F
Max. operating pressure:	85 psia
Parts in contact with media:	Flange: 1.4571
	Seals: Graphite/1.4404 and see filter

Ordering instructions

The item number is a code for the configuration of your unit. Please use the following model key:

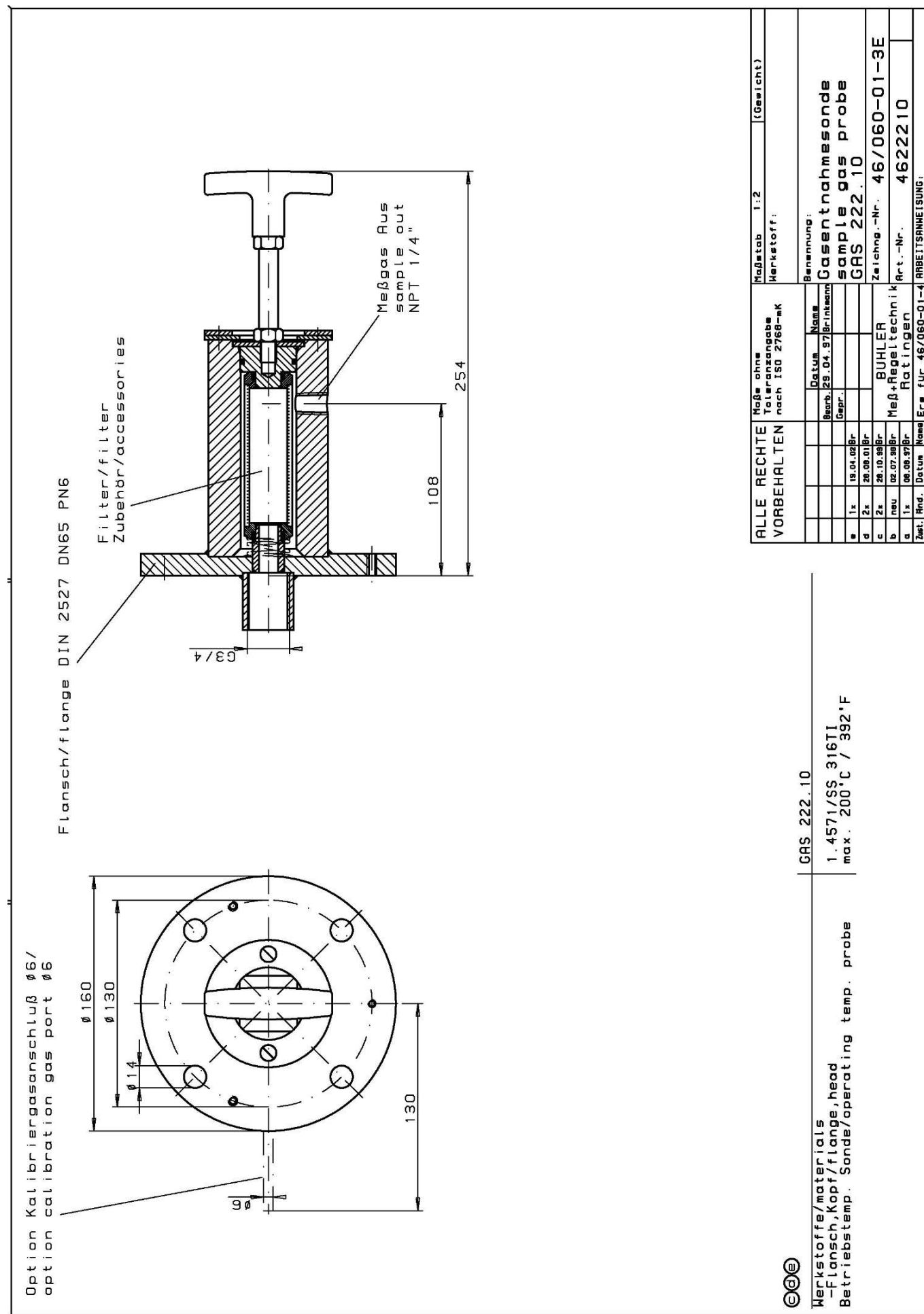
4622210	X	9	9	0	0	X	0	0	9	9	9	9	9	9	Product Characteristics
															Flange
	0														DIN DN65 PN6
	2														ANSI 3"-150 lbs - without CSA C & US approval
															Power supply sample probe
				0											none
															Calibrating gas connection
				0											No calibrating gas connection
				1											6 mm
				2											6 mm + check valve
				3											1/4"
			4											1/4" + check valve	

Options

The base unit becomes functional by adding accessories suitable for the application. Please refer to accessory data sheet no. 461099 for information.

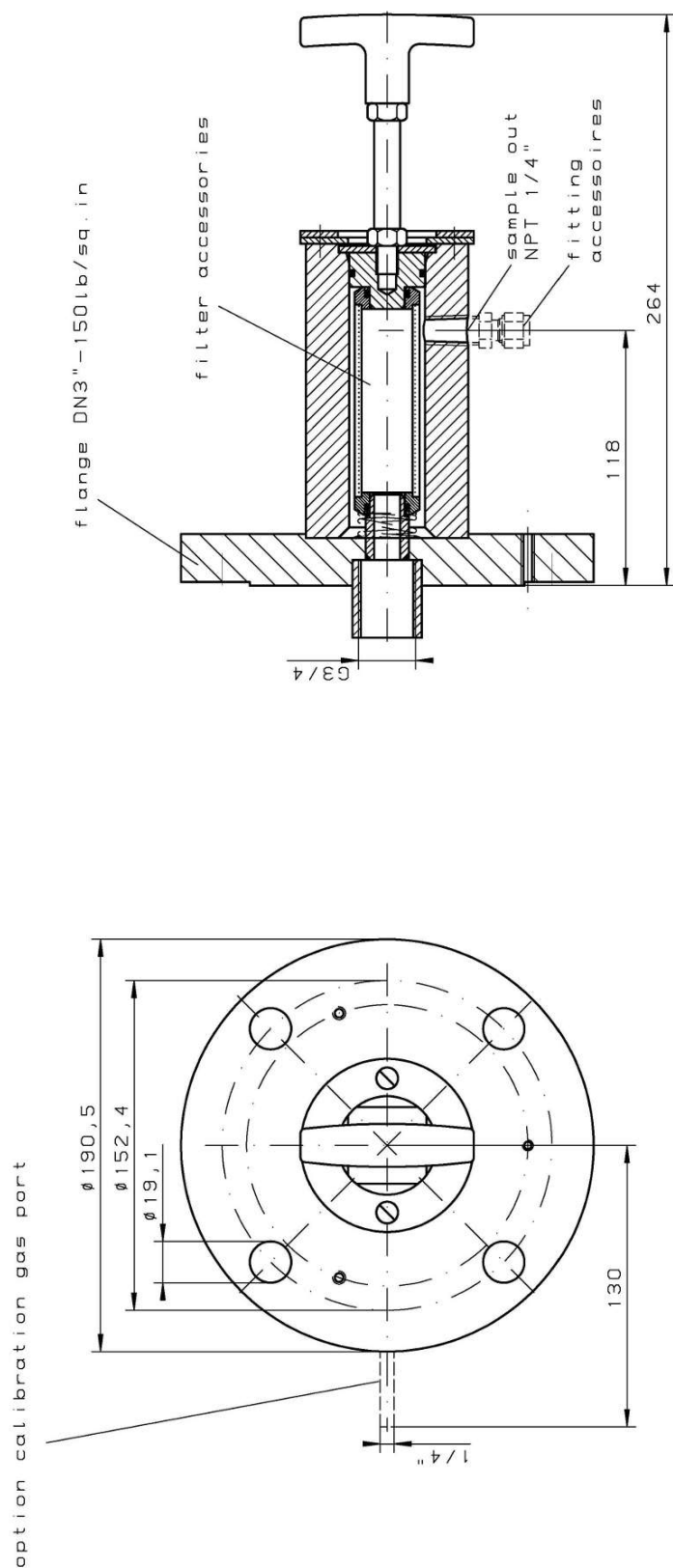
Please also refer to data sheet no. 461000 "GAS 222 Gas Probes" for a general description.

Dimensions



Dimensions (ANSI flange)

NOTICE! ANSI flange only available without CSA approval.



alle Kanten geradlinig		Maße ohne Toleranzangabe nach ISO 2768-mK		Maßstab 1:2 (Gewicht)	
Oberflächenbe- arbeitungszeichen nach		ALLE RECHTE VORBEHALTEN		Werkstoff:	
$\checkmark = \checkmark$	$\checkmark = \checkmark$	Bearb. Gr.	Datum 01.09.2005	Benennung: sample gas probe GAS 222.10 ANSI	
$\chi / = R_{\text{a}} 63$	$\chi / = R_{\text{a}} 63$	Bearb. Gr.	Datum 	Zeichnung.-Nr. 46/108-Z01-01-3A	
$\gamma / = R_{\text{a}} 16$	$\gamma / = R_{\text{a}} 16$	Bearb. Gr.	Datum 	Art.-Nr. 4622210C	
$z / = R_{\text{a}} 4$	$z / = R_{\text{a}} 4$	Bearb. Gr.	Datum 	ARBEITSZEICHNUNG:	
		neu Zust. Rnd.		29.09.06	
BUHLER		Ers. für		4622210C	

materials flange, head	1.4571/SS316Ti
operating temperature probe	max. 200°C / 392°F