



Sample gas probe GAS 222.20

In many applications gas analysis is the key for safe and efficient control of process flows, environmental protection and quality assurance. In extractive gas analysis the location of the gas sampling point is crucial for the reproducibility and accuracy of the analysis results.

The specific filter capacity, corrosion resistance and functional equipment requirements for the probe arise from the composition of the sample gas.

However, operating costs are also an important criterion in the selection, as the sampling points are frequently located at hard to access points in the system. Effective particle filter backwashing options and low maintenance characterise the extensive GAS probe series.

Heated probe with downstream filter and weather hood

The downstream filter can easily be removed by turning the handle 90°

The probe body and the area around the screw connection for the heated sample gas line are completely isolated

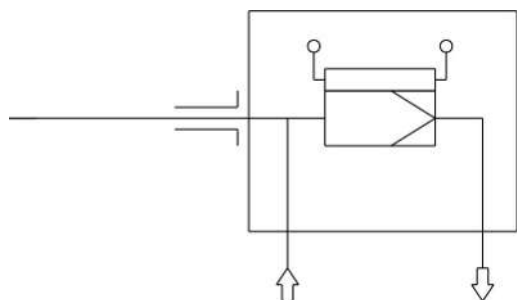
Electronic temperature controller up to 395 °F with low/high temperature alarm and display

For dust loads up to 2 g/m³

This probe is not suitable for use in Ex areas



Flow chart



Technical Data

Gas Probe Technical Data

Probe operating temperature:	max. 395 °F
Ambient temperature:	-4 to 158 °F (can be limited by optional add-ons)
Controller temperature range:	122 to 395 °F
Low/high temperature alarm:	Alarm adjustable $\pm 5 \dots 30$ K from setpoint, factory preset 15 K Max. switching current 1 A
Electrical data:	230 V, 2.0 A, 50/60 Hz 115 V, 3.8 A, 50/60 Hz
IP rating:	IP54
Max. operating pressure:	85 psia
Parts in contact with media:	Flange: 1.4571 Seals: Graphite/1.4404 and see filter

Ordering instructions

The item number is a code for the configuration of your unit. Please use the following model key:

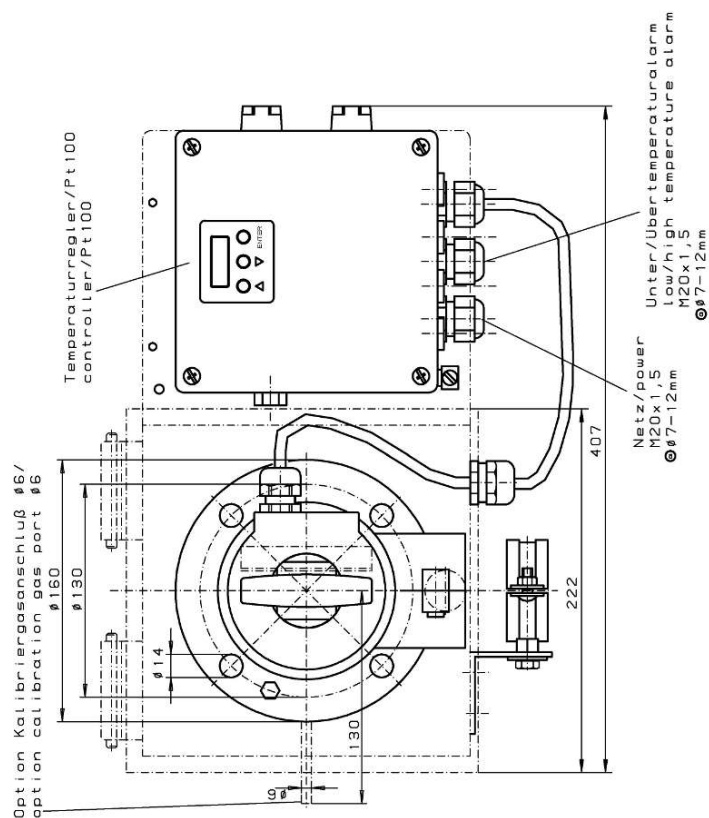
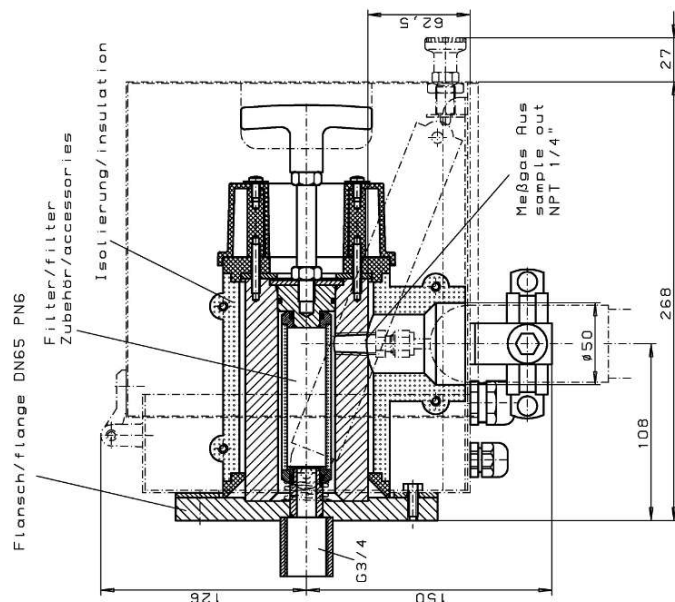
4622220	X	9	9	0	X	X	X	X	9	9	9	9	9	9	Product Characteristics
															Flange
	0														DIN DN65 PN6
	2														ANSI 3"-150 lbs - without CSA C & US approval
															Power supply sample probe
		1													115 V
		2													230 V
															Calibrating gas connection
		0													No calibrating gas connection
		1													6 mm
		2													6 mm + check valve
		3													1/4"
		4													1/4" + check valve
															Connection heated extension
		0													No
		1													Yes
															Built-in temperature controller for heated extension
		0													No
		1													Yes

Options

The base unit becomes functional by adding accessories suitable for the application. Please refer to accessory data sheet no. 461099 for information.

Please also refer to data sheet no. 461000 "GAS 222 Gas Probes" for a general description.

Dimensions



Art. Nr. / part-no.	4622220	4622222
Werkstoffe/materials		
-Flansch, Kopf / flange, head		
Betriebstemperatur Sonde/ operating temperature probe	1.4571 / SS316Ti max. 200°C / 392°F	
Heizung / heater		
-Temperaturbereich / temperature range	230V 50/60Hz 440W	115 50/60Hz 425W
-Alarm einstellbar / alarm adjustable	50 ... 200°C / 122 ... 392°F 15 ... 30°C / 59 ... 84°F vom Sollwert / from set-point +15°C / +27°F	
werkseitig eingestellt / factory set		
max. Schaltstrom / max. current	1A	
-Schutzart / degree of protection	IP54	
Umgebungstemperatur / ambient temperature	-20 ... +70°C / -4 ... +158°F	

alle Konten gratfrei überprüfen ohne Kosten	<input checked="" type="checkbox"/> \sqrt \checkmark <input checked="" type="checkbox"/> \sqrt \checkmark <input checked="" type="checkbox"/> \sqrt \checkmark <input checked="" type="checkbox"/> \sqrt \checkmark	ALLE RECHTE VORBEHALTEN	Holz ohne Klebe nach ISO 2768-M	Material Hersteller: Menge: Benennung: Gasentnahmesonde/ sample gas probe GAS 222.20	Maßstab 1:2 (Gewicht):
1. <input checked="" type="checkbox"/> \sqrt \checkmark 2. <input checked="" type="checkbox"/> \sqrt \checkmark 3. <input checked="" type="checkbox"/> \sqrt \checkmark 4. <input checked="" type="checkbox"/> \sqrt \checkmark	g. 24. 06.12 Br. 15. 10. 2005 15. 10. 2005 15. 10. 2005	15. 10. 2005 15. 10. 2005 15. 10. 2005 15. 10. 2005	15. 10. 2005 15. 10. 2005 15. 10. 2005 15. 10. 2005	Zeichnung-Nr. 46/062-01-2A Art.-Nr.	15. 10. 2005 15. 10. 2005 15. 10. 2005 15. 10. 2005

Dimensions (ANSI flange)

NOTICE! ANSI flange only available without CSA approval.

