



## Sample gas probe GAS 222.35-U

In many applications gas analysis is the key for safe and efficient control of process flows, environmental protection and quality assurance. In extractive gas analysis the location of the gas sampling point is crucial for the reproducibility and accuracy of the analysis results.

The specific filter capacity, corrosion resistance and functional equipment requirements for the probe arise from the composition of the sample gas.

However, operating costs are also an important criterion in the selection, as the sampling points are frequently located at hard to access points in the system. Effective particle filter backwashing options and low maintenance characterise the extensive GAS probe series.

Unheated probe with upstream filter

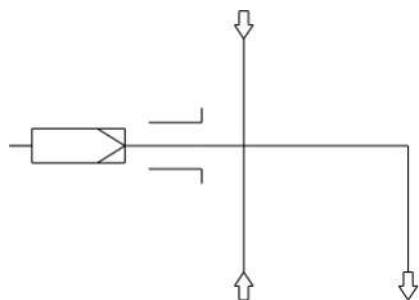
The filter element can easily be removed by turning the handle 90°

For dust loads up to 200 g/m<sup>3</sup>, non-condensable gases

The probe is suitable for use in explosive areas



## Flow chart



## Technical Data

## Gas Probe Technical Data

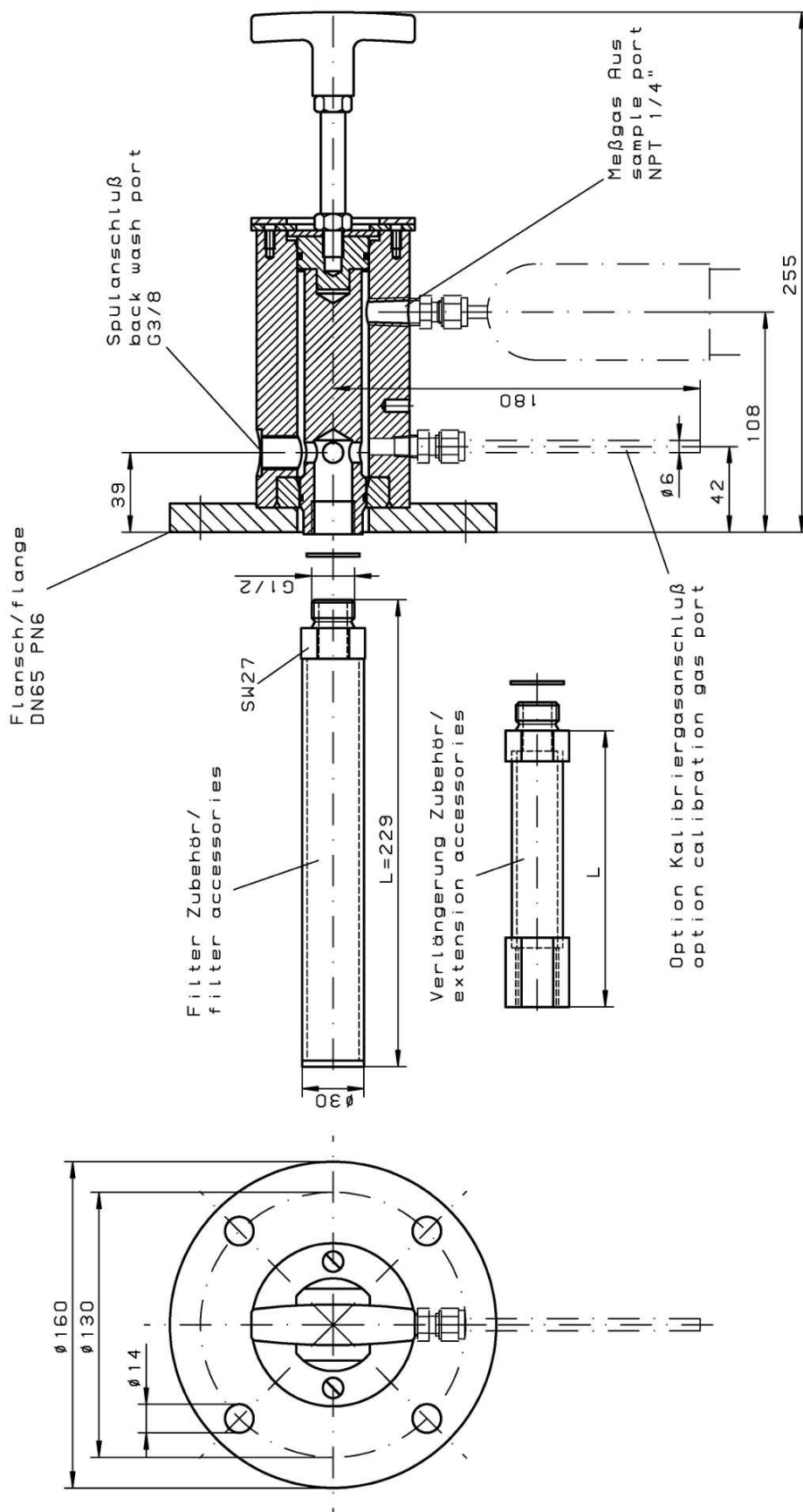
Operating temperature:	max. 392 °F	
Ambient temperature without accessories:	-4 to 176 °F	
Ambient temperature for accessories:	<b>Component</b>	<b>Ambient temperature range</b>
	Compressed air valve:	14 °F < T <sub>amb</sub> < 131 °F
Medium temperature (blowback)	<b>Component</b>	<b>Medium temperature range</b>
	Compressed air valve:	14 °F to 176 °F
Max. operating pressure:	85 psia	
Parts in contact with media:	Flange: 1.4571 Seals: Graphite/1.4404 and see filter	

[illegible]

## Options

Please also refer to data sheet no. 461000 "GAS 222 Gas Probes" for a general description.

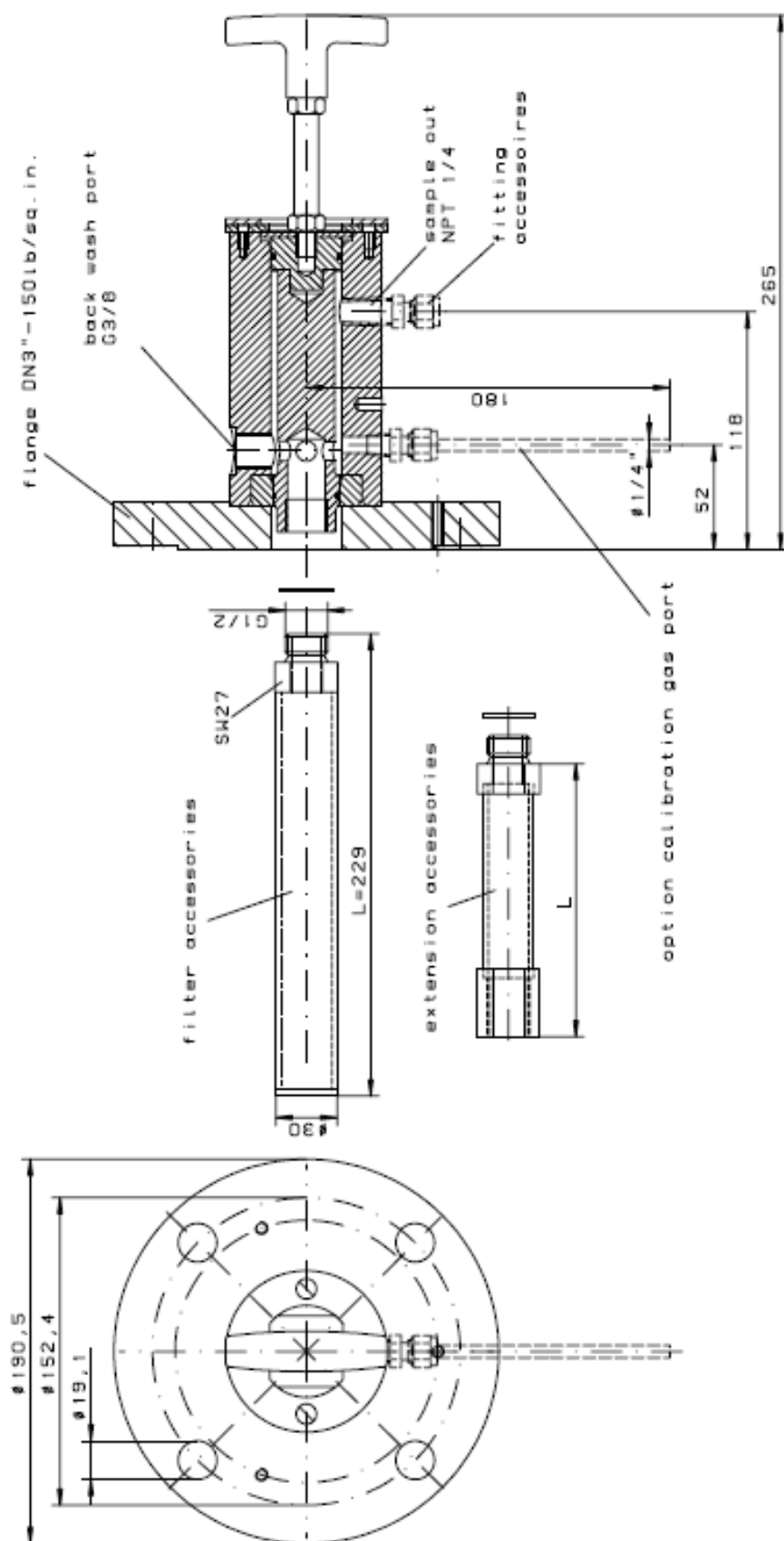
# Dimensions



Technische Angaben/technical data		Maßstab 1:2 (Gewicht)	
Werkstoffe Flansch, Kopf/ materials flange, head Betriebs temperatur Sonde/ operating temperature probe		Werkstoff:	
: 1.4571/SS316Ti/Viton		Benennung: Gasentnahmesonde sample gas probe GAS 222.35-U	
: max. 200°C / 392°F		Zeichnung.-Nr. 46/100-Z01-01-3	
		Art.-Nr. 4622235U	
		ARBEITSANLEISUNG:	
		BUHLER	
		ALLE RECHTE VORBEHALTEN	
		Maße ohne Toleranzangabe nach ISO 2768-mK	
		Datum Name	
		Bearb. 16.12.2003 Brinkmann	
		Gepr.	
		Zust. Rnd. Datum Name Ers. für	
		alle Kanten gratfrei	
		Oberflächenbear- beitungszeichen	
		Rb. <input checked="" type="checkbox"/>	
		Ra <input checked="" type="checkbox"/>	
		Rz <input checked="" type="checkbox"/>	
		Rt <input checked="" type="checkbox"/>	

### Dimensions (ANSI flange)

**NOTICE! ANSI flange only available without CSA approval.**

[illegible]

materials flange, head	1.4571/SS316
operating temperature probe	max. 200°C / 392°F