

## Sample gas probe GAS 222.30

In many applications gas analysis is the key for safe and efficient control of process flows, environmental protection and quality assurance. In extractive gas analysis the location of the gas sampling point is crucial for the reproducibility and accuracy of the analysis results.

The specific filter capacity, corrosion resistance and functional equipment requirements for the probe arise from the composition of the sample gas.

However, operating costs are also an important criterion in the selection, as the sampling points are frequently located at hard to access points in the system. Effective particle filter backwashing options and low maintenance characterise the extensive GAS probe series.

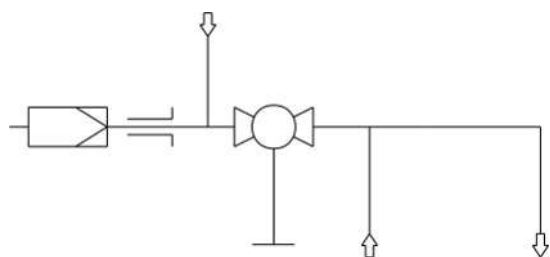
Unheated probe with Shut-off valve and upstream filter

For dust loads up to 200 g/m<sup>3</sup>, non-condensable gases

The probe is suitable for use in explosive areas



## Flow chart



## Technical Data

## Gas Probe Technical Data

Probe operating temperature:	max. 200 °C	
Ambient temperature without accessories:	-20 to +80 °C	
Ambient temperature with accessories:	<b>Component</b>	<b>Ambient temperature range</b>
	Compressed air valve:	-10 °C < T <sub>amb</sub> < +55 °C
	Pneumatic drive:	-20 °C < T <sub>amb</sub> < +80 °C
	Limit switch:	-20 °C < T <sub>amb</sub> < +100 °C
	Solenoid valve for pneumatic drive:	-10 °C < T <sub>amb</sub> < +55 °C
Medium temperature (blowback):	<b>Component</b>	<b>Medium temperature range</b>
	Compressed air valve:	-10 °C to +80 °C
	Solenoid valve for pneumatic drive:	-10 °C to +100 °C
Max. operating pressure:	6 bar	
Materials in contact with media		
Flange:	Stainless steel 1.4571	
Probe body:	Stainless steel 1.4571	
Ball valve:	Stainless steel 1.4408/1.4462/PTFE	
Seal:	Stainless steel 1.4404/graphite/and see filter	

## Ordering Instructions

The item number is a code for the configuration of your unit. Please use the following model key:

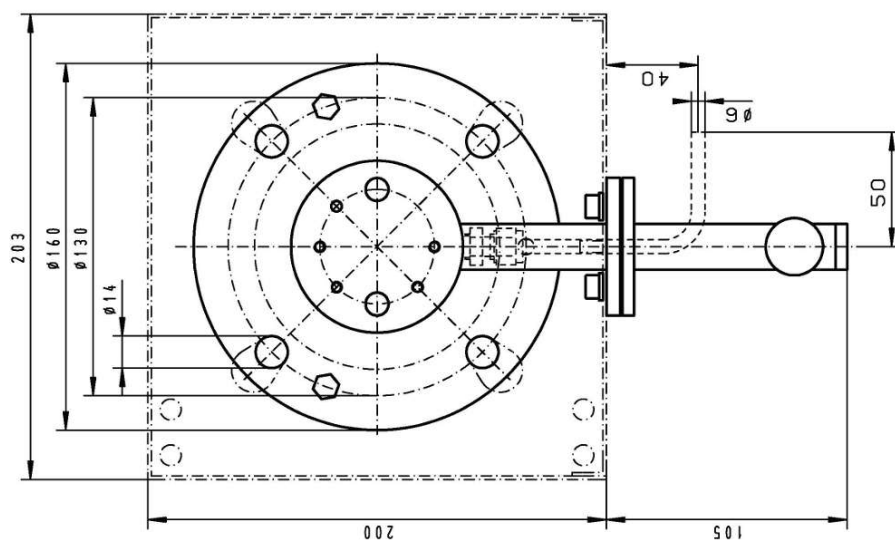
4622230	X	9	9	0	0	X	0	0	X	9	X	X	X	X	Product Characteristics
															Flange
	0														DIN DN65 PN6
	2														ANSI 3"-150 lbs - without CSA C & US approval
															Power supply sample probe
				0											none
															Calibrating gas connection
					0										No calibrating gas connection
					1										6 mm
					2										6 mm + check valve
					3										1/4"
					4										1/4" + check valve
															Connection heated extension
					0										No
															Built-in temperature controller for heated extension
					0										No
															Blowback with air reservoir <sup>1)</sup>
															Air reservoir heating
						1									Yes
						9									No
															Built-in blowback control
						9									No
															Compressed air valve / valve voltage information
							0								Manual
							1								115 V
							2								230 V
							3								24 V
							9								None (if no blowback requested)
															Pneumatic drive for ball valve
							0								Manual
							1								Monostable pressure-free open
							2								Monostable pressure-free closed
							3								Bi-stable
															Limit switch for pneumatic drive
							1								Yes
							9								No
															Control valve for pneumatic drive
								3							3/2-way valve
								5							5/2-way valve
								9							No control valve

<sup>1)</sup> For flammable sample gas, always use inert gas for blowback. Probe blowback prohibited when using explosive gases!


## Options

The base unit becomes functional by adding accessories suitable for the application. Please refer to accessory data sheet no. 461099 for information.

Please also refer to data sheet no. 461000 "GAS 222 Gas Probes" for a general description.

Option Kalibergasanschluss/  
option calibration gas port

Werkstoffe/materials		1.4571		1.4408 / 1.4462 / PTFE		max. 200°C / 392°F		6 bar	
-Flansch, Körper / flange, body									
-Kugelhahn / ball valve									
Betriebstemperatur Sonde / operating temperature probe									
Steuerdruck Pneumatikzylinder / pilot pressure pneumatic actuator									

alle Konten gratfrei		ALLE RECHTE VORBEHALTEN		Maße ohne Toleranzangabe nach ISO 2768-mK		Maßstab 1:2		(Gewicht)	
Oberflächenbear- beitungszeichen						Werkstoff:			
✓ = ✓ x / = $\sqrt{R_a}$ 63 y / = $\sqrt{R_a}$ 16 z / = $\sqrt{R_a}$ 4						Benennung: <b>Gasentnahmesonde sample gas probe GAS 222.30</b>			
						Zeichn.-Nr. 46/064-01-3H			
						Art.-Nr. 4622230			
						ARBEITSANWEISUNG:			
									
						h 1 x 23.04.23 Br			
						g KH 10.12.08 Br			
						Zust. End. Datum		Normal	

### Dimensions (ANSI flange)

**NOTICE! ANSI flange only available without CSA approval.**

